

SPECIFICATIONS

- Range	3.25 KM
- RPM	2880
- Motor HP Rating	2
- Weight	33.0 KG (Un-Packed)
- Winding	Copper Wire
- Body Material	Alluminium Casting
- Colour	On Demand
- Fittment	Horizontal
- Mounting	Double Ended
- Power Supply	440V 50HZ

ELECTRICAL HEAVY DUTY SIREN (3.25 KM)

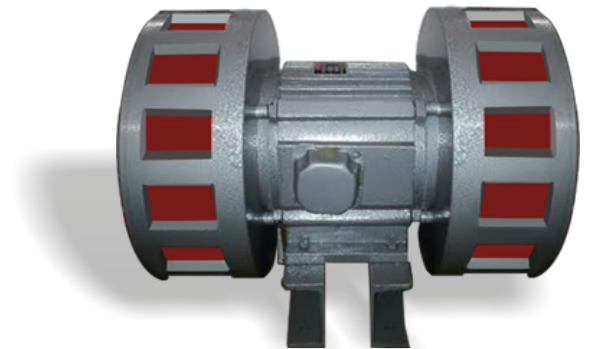


MODEL NO. : QT - 3.25 KM (CL)

SPECIFICATIONS

- Range	5.0KM
- RPM	2880
- Motor HP Rating	3
- Weight	55.0 KG (Un-Packed)
- Winding	Copper Wire
- Body Material	Alluminium Casting
- Colour	On Demand
- Fittment	Horizontal
- Mounting	Double Ended
- Power Supply	440V 50HZ

ELECTRICAL HEAVY DUTY SIREN(5 KM)

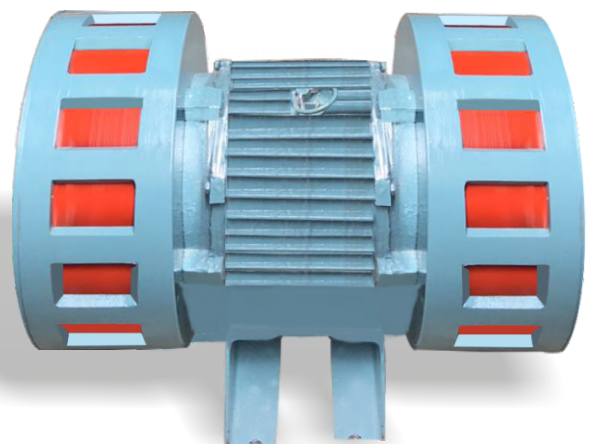


MODEL NO. : QT - 5 KM (CL)

SPECIFICATIONS

- Range	8.0KM
- RPM	2880
- Motor HP Rating	5
- Weight	85.0 KG (Un-Packed)
- Winding	Copper Wire
- Body Material	Alluminium Casting
- Colour	On Demand
- Fittment	Horizontal
- Mounting	Double Ended
- Power Supply	440V 50HZ

ELECTRICAL HEAVY DUTY SIREN (8 KM)



MODEL NO. : QT - 8 KM (CL) 